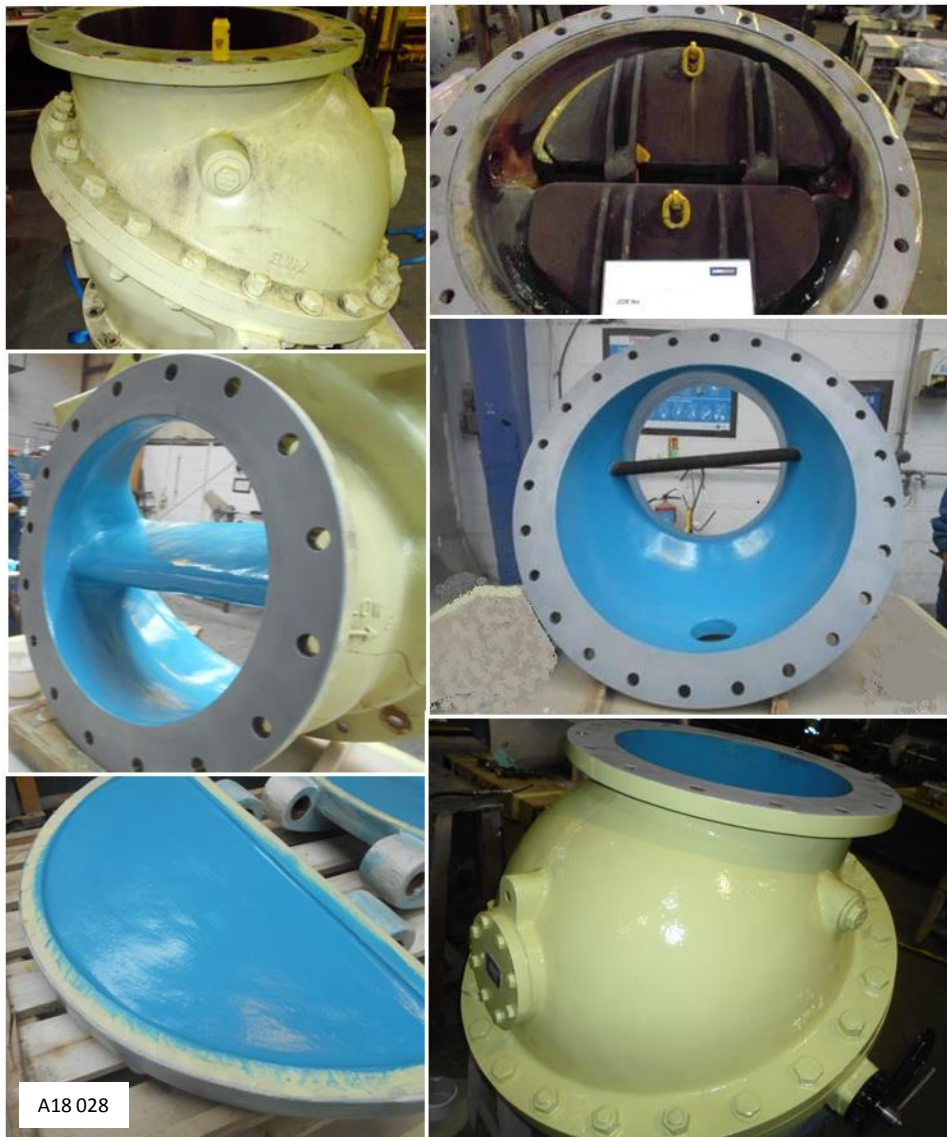


CORROSION PROTECTION FOR 24" NON RETURN GLOBE VALVE



CORROSERVE CASE STUDY

24" Non Return Globe Valve

A globe valve at a UK nuclear energy plant was suffering from corrosion due to its service environment carrying sea water. The valve casing, both doors and related shaft bearings needed protection from any future corrosion.

Corroglass 600

The valve was shipped to Corroserve's Leeds workshop where it was stripped down and examined before being abrasive blasted to the required surface profile and cleanliness. After a thorough clean down and vacuum, multiple coats of Corroglass 600 series were applied to casing and doors to the required dft of 1500µm.

Once cured all surface protection was removed, edges dressed and a full visual inspection completed. Thickness testing and spark testing was also completed to ensure the quality of the finished coating system.

The external surface of the valve was coated with Plasmet ZF, a surface tolerant coating, and a top coat of industrial enamel BS4800-12333, Willow as per the customers requirements.



CORROSERVE